

TECHNICAL DATA

Size Range:	DN40 - DN1000
Pressure Class	PN10, PN16, PN25
Face to face:	DIN3202-K3
Temperature Range:	-20°C to 100°C (standard EPDM seat) -20°C to 80°C (optional NBR seat) -20°C to 150°C (optional Viton seat)
Pressure Testing:	AP1598
Coating:	Fusion Bonded Epoxy

FEATURES

- Body (optional carbon steel, ductile iron or duplex).
- Disc (optional carbon steel, ductile iron or duplex).
- Upper and lower PTFE thrust bearings.
- Standard EPDM Sealing O-Ring (optional NBR or Viton).
- Dual springs for quicker activation long life and even distribution of force over both plates.
- Fusion bonded epoxy coated body (internal & external).
- Long leaf springs (prevent rubbing of disc on seat).

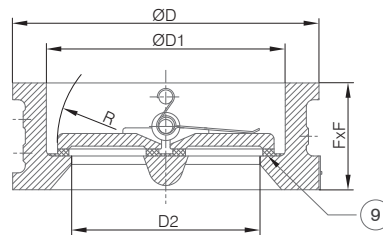


MATERIAL SPECIFICATION & PARTS LIST

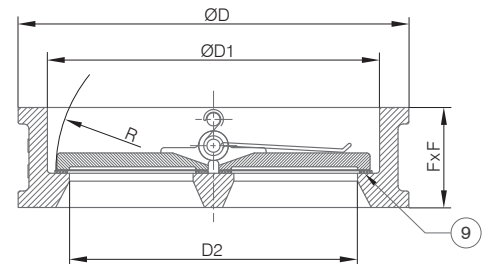
NO.	DESCRIPTION	MATERIAL
1	Body	Cast Iron
2	Disc	SS316
3	Stem	SS316
4	Spring	SS316
5	Bearing	PTFE
6	Bearing	PTFE
7	Sealing O-Ring	EPDM
8	Hex Screw	SS316
9	Seat	EPDM
10	Eye Bolt	SS316

DIMENSIONAL DRAWINGS

DN50 - DN500
SECTION A - A



DN600 - DN800
SECTION A - A



DIMENSIONS (MM)

AC10 DN50 - DN800							
DN	Fx F	ØD	ØD1	ØD2	R	Weight (Kg)	
50	43	96	65	40	27	1.3	
65	46	110	80	60	35	2.1	
80	64	128	94	70	42	2.9	
100	64	156	117	88	50	4.3	
125	70	187	145	115	64	6.4	
150	76	213	171	134	77	9.1	
200	89	267	224	182	102.5	15.2	
250	114	328	265	220	125	26.5	
300	114	375	310	260	146	37	
350	127	444	360	298	170	55	
400	140	495	410	350	195	80	
450	152	558	450	385	215	101	
500	152	615	505	438	238	114	
600	178	723	624.5	573	292	172	
700	229	812	720	680	350	258	
800	241	948	825	770	400	322	

Other sizes available on request.

FACTORY ACCREDITED:



ISO 90001:2008



CE879



ISO 90001:2000



ISO 90001:2008



CE8879

