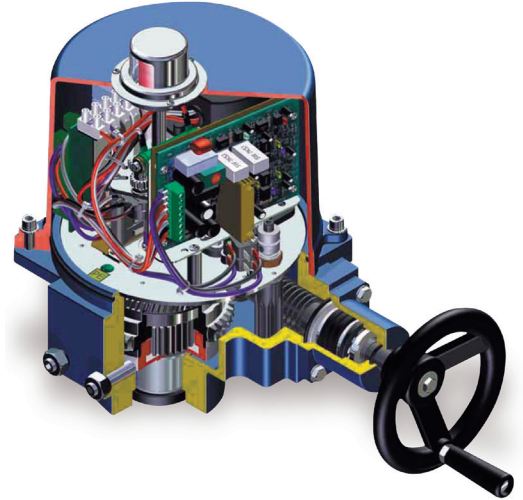




EOM-1



EOM-2



Electro-torque EOM electric actuators are a high quality 90 degree rotation actuator ideal for valve actuation. Featuring a heavy duty steel gear train with bronze bushes and an IP67 NEMA 4X rated powder coated aluminium housing suitable for industrial as well as general purpose applications. Mounting of Electro-torque EOM actuators is made easy as the actuator has a female drive and ISO5211 drilling pattern and the torque range available is from 35Nm to 4500Nm.

### FEATURES

- Non-corrosive powder coated aluminium housing.
- 2 additional limit switches for auxiliary outputs.
- Visual position indicator window.
- Manual override (except EOM-A).
- No de-clutching necessary for manual override.
- Self locking gear train to prevent back drive.
- Built in thermal overload protection.
- IP67 protection rated (when installed correctly).
- Easily adjustable travel cams.
- Ambient temperature rated -5°C to +60°C.
- Voltages available in DC 12V, AC 24V, DC 24V, AC 110V, AC 240V and AC 415V.
- Anti-condensation heater (optional for EOM-1 & EOM-A).

### OPTIONS

- IP68 enclosure.
- Modulating controller 4-20Ma input and output.
- Spring return (EOM-SY Series).
- Anti-condensation heater for EOM-1 & EOM-A.
- Manual override for EOM-A.
- Local/ remote control.
- Torque switches.
- Potentiometer.
- Position transmitter 4-20Ma output.
- Adjustable speed board.

### TECHNICAL DATA

Model	Torque (Nm)	Speed Sec/90°	Power (Watts)	Mounting (ISO5211)	Weight (Kg)
EOM-1	35	12	10	F03/F05	2
EOM-A	50	20	10	F05/F07	3
EOM-2	90	15	40	F07	11
EOM-3	150	22	40	F07	11
EOM-4	400	16	80	F10	20
EOM-5	500	22	80	F10	20
EOM-6	650	28	80	F10	20
EOM-7	1000	46	80	F14/F12	32
EOM-8	1500	46	90	F14/F12	32
EOM-9	2000	58	80	F16	71
EOM-10	2500	58	80	F16	71
EOM-11	3000	58	220	F16	72
EOM-12	3500	58	220	F16	72
EOM-13	4500	80	300	F16-F25	106

FACTORY ACCREDITED:



Designs, materials and specifications shown are subject to change without notice due to our continuing program of product development. EOM Series\_V1\_20130513.

All content is protected by Copyright and is owned and/or licensed by AVFI Pty Ltd. Copyright© AVFI Pty Ltd.

# ELECTRO-TORQUE EOM SERIES

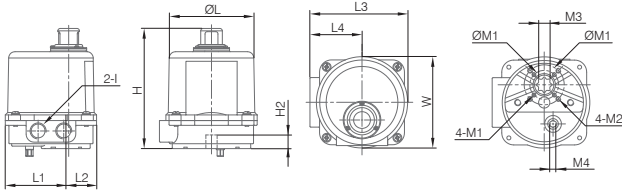
QUARTER TURN  
ELECTRIC ACTUATORS



## DIMENSIONS (MM)

Model	H	H2	ØL	L1	L2	I	L3
EOM-1	150	17	106	79	35	1/2PS	122
Mounting	L4	W	ØM1	M1	M2	M3	M4
F03/F05	65	114	36/50	M5x0.8	M6x1.0	14(max)	8

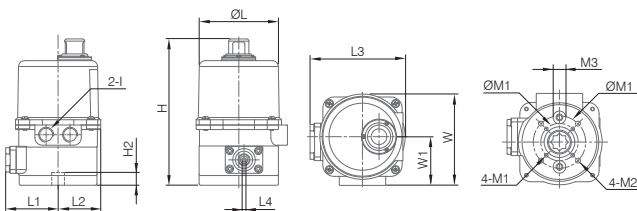
### EOM-1 SERIES



Model	H	H2	ØL	L1	L2	I	L3
EOM-A	196	20	106	57	57	1/2PS	114
Mounting	L4	W	W1	ØM1	M1	M2	M3
F05/F07	—	122	65	50/70	M6x1.0	M8x1.25	17

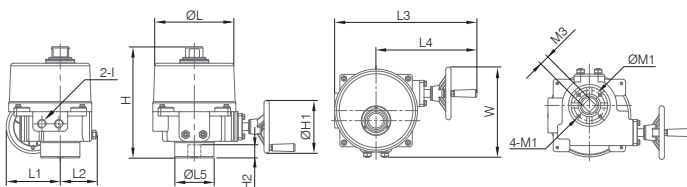
Model	H	H2	ØL	L1	L2	I	L3
EOM-A-M	196	20	106	70	57	1/2PS	127
Mounting	L4	W	W1	ØM1	M1	M2	M3
F05/F07	5	122	65	50/70	M6x1.0	M8x1.25	17

### EOM-A&EOM-A-M SERIES



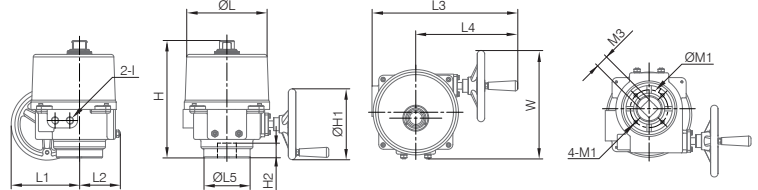
Model	H	ØH1	H2	ØL	L1	L2	I
EOM-2&EOM-3	255	121	30	181	124	84	1/2PS
Mounting	L3	L4	ØL5	W	ØM1	M1	M3
F07	326	231	90	207	70	M8x1.25	22(max)

### EOM-2&EOM-3 SERIES



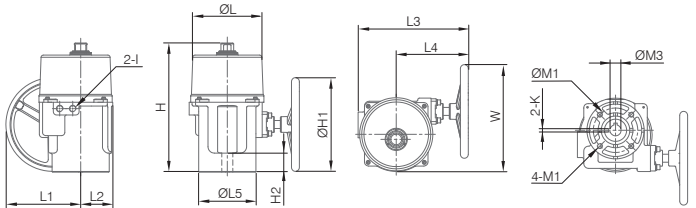
Model	H	ØH1	H2	ØL	L1	L2	I
EOM-4-EOM-6	317	191	40	217	184	110	1/2PS
Mounting	L3	L4	ØL5	W	ØM1	M1	M3
F10	394	275	125	292.5	102	M10x1.5	35

### EOM-4-EOM-6 SERIES



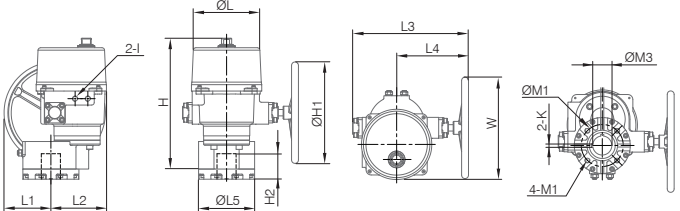
Model	H	ØH1	H2	ØL	L1	L2	I	L3
EOM-7&EOM-8	406	295	60	217	235	101	1/2PS	347
Mounting	L4	ØL5	W	ØM1	M1	ØM3	K	
F12/F14	227	180	336	125/140	M12x1.75/M16x2.0	35(max)	10	

### EOM-7&EOM-8 SERIES



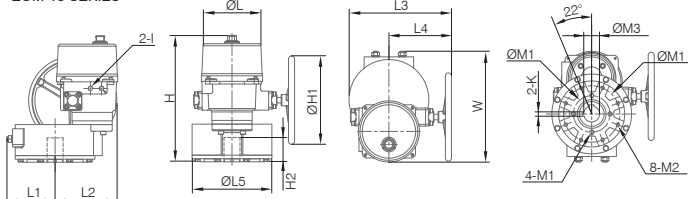
Model	H	ØH1	H2	ØL	L1	L2	I	L3
EOM-9-EOM-12	554	398	100	261	184	218	1/2PS	455
Mounting	L4	ØL5	W	ØM1	M1	ØM3	K	
F16	282	220	402	165	M20x2.5	75	12	

### EOM-9-EOM-12 SERIES



Model	H	ØH1	H2	ØL	L1	L2	I	L3
EOM-13	571	398	110	261	217	283	1/2PS	462
Mounting	L4	ØL5	W	ØM1	M1	M2	ØM3	K
F16	282	360	500	254	M20x2.5	M16x2.0	72	20x12

### EOM-13 SERIES



Designs, materials and specifications shown are subject to change without notice due to our continuing program of product development. EOM Series\_V1\_20130513.

All content is protected by Copyright and is owned and/or licensed by AVFI Pty Ltd. Copyright © AVFI Pty Ltd.

### MOTOR DATA

#### AC/DC 12V/24V, 1-Phase

Model	Max. Torque (Nm)	Speed (Sec/90°)	Power (Watts)	Current AC/DC 12V			Current AC/DC 24V		
				Run	Start	Lock	Run	Start	Lock
EOM-1	35	15	10	1.9A	2.0A	2.8A	1.1A	1.1A	1.6A
EOM-A/EOM-A-M	50	20	10	1.3A	1.5A	2.8A	0.8A	0.9A	1.6A
EOM-2	90	15	40	3.4A	5.2A	16.5A	2.2A	4.5A	14.5A
EOM-3	150	22	40	4.4A	4.9A	16.5A	2.4A	5.0A	14.5A
EOM-4	400	16	80	16.1A	16.1A	33.0A	8.5A	9.2A	30.0A
EOM-5	500	22	80	14.1A	13.5A	33.0A	7.5A	9.0A	30.0A
EOM-6	650	28	80	12.3A	12.5A	33.0A	7.0A	8.5A	30.0A
EOM-7	1000	46	80	—	—	—	6.8A	7.8A	30.0A
EOM-8	1500	46	80	—	—	—	8.1A	8.0A	30.0A
EOM-9	2000	58	80	—	—	—	8.8A	11.0A	26.0A
EOM-10	2500	58	80	—	—	—	11.8A	11.0A	26.0A
EOM-11	3000	58	220	—	—	—	15.1A	11.0A	33.0A
EOM-12	3500	58	220	—	—	—	17.8A	12.0A	33.0A
EOM-13	—	—	—	—	—	—	—	—	—

#### AC 110V/240V, 1-Phase

Model	Max. Torque (Nm)	Speed (Sec/90°)	Power (Watts)	Current AC 110V			Current AC 240V		
				Run	Start	Lock	Run	Start	Lock
EOM-1	35	13	10	0.6A	0.6A	0.7A	0.3A	0.4A	0.4A
EOM-A/EOM-A-M	50	24	10	0.6A	0.6A	0.7A	0.3A	0.4A	0.5A
EOM-2	90	17	40	1.0A	1.8A	1.6A	0.5A	0.8A	0.9A
EOM-3	150	26	40	1.2A	1.8A	1.6A	1.0A	1.2A	0.9A
EOM-4	400	18	80	1.9A	3.8A	3.6A	1.1A	2.0A	2.2A
EOM-5	500	25	80	2.0A	3.8A	3.6A	1.1A	2.0A	2.2A
EOM-6	650	31	80	2.1A	3.8A	3.6A	1.1A	2.0A	2.2A
EOM-7	1000	55	120	3.1	8.5A	9.0A	1.4A	4.1A	5.0A
EOM-8	1500	55	120	3.3	9.0A	9.0A	1.6A	4.4A	5.0A
EOM-9	2000	70	180	3.3	5.8A	5.9A	2.1A	3.8A	3.6A
EOM-10	2500	70	180	4.0	6.5A	5.9A	2.3A	4.0A	3.6A
EOM-11	3000	70	180	4.5	3.5A	5.9A	2.5A	4.2A	3.6A
EOM-12	3500	70	220	4.0	8.0A	7.5A	2.4A	4.4A	4.8A
EOM-13	4500	95	220	4.2	8.0A	7.5A	2.4A	4.8A	4.8A

#### AC 415V, 3-Phase

Model	Max. Torque (Nm)	Speed (Sec/90°)	Power (Watts)	Motor Speed (RPM)	Current AC 415V		
					Run	Start	Lock
EOM-2	90	17	40	1450	0.4A	1.3A	0.7A
EOM-3	150	26	40	1450	0.4A	1.3A	0.7A
EOM-4	400	18	120	1450	0.8A	2.5A	2.0A
EOM-5	500	25	120	1450	0.8A	2.5A	2.0A
EOM-6	650	31	120	1450	0.8A	2.5A	2.0A
EOM-7	1000	55	180	1450	0.4A	0.6A	1.0A
EOM-8	1500	55	220	1450	0.6A	0.8A	1.2A
EOM-9	2000	70	180	1450	0.4A	0.6A	1.0A
EOM-10	2500	70	220	1450	0.4A	0.6A	1.0A
EOM-11	3000	70	250	1450	0.6A	0.8A	1.5A
EOM-12	3500	70	300	1450	0.6A	0.8A	1.5A

Designs, materials and specifications shown are subject to change without notice due to our continuing program of product development. EOM Series\_V1\_20130513.

All content is protected by Copyright and is owned and/or licensed by AVFI Pty Ltd. Copyright© AVFI Pty Ltd.

# ELECTRO-TORQUE EOM SERIES

QUARTER TURN  
ELECTRIC ACTUATORS



## OPTIONAL ITEMS

### SPACE HEATER

A space heater can increase the internal temperature and keep the internal area dry, avoiding moisture or condensation build up. Heater is not recommended if the ambient temperature is above 35°C/95°F. However, when the temperature varies greatly from day to night or between summer and winter, heater and thermostat (25±5°C / 77±9°F) are recommended.



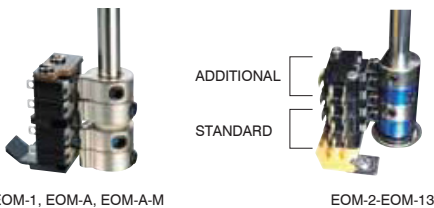
### HEATER THERMOSTAT

This option can switch the heater off when the temperature inside the actuator is over 25°C/77°F.



### ADDITIONAL LIMIT SWITCHES

The standard model is equipped with the first and second switches for fully-open and fully-closed. This option consists of the third and fourth auxiliary switches which provide dry contacts for fully-open and fully-closed.



### CURRENT POSITION TRANSMITTER

This option can provide 4-20mA output signal for position indicator.



EOM-1, EOM-A, EOM-A-M  
THIS PICTURE IS BASED ON DC 24V.



EOM-2-EOM-13  
THIS PICTURE IS BASED ON AC 110.

### MODULATING CONTROLLER

The actuator can be operated according to input signal and provide output signal. Input signal: 4-20mA, 1-5V, 2-10V. Output signal: 4-20mA, 2-10V



EOM-1, EOM-A, EOM-A-M  
THESE PICTURES ARE BASED ON AC 110.



EOM-2-EOM-13

### 75% DUTY CYCLE (IEC STANDARD)

The option is suggested for higher starting frequency.



EOM-1-EOM-A-M (75% DUTY CYCLE)  
THESE PICTURES ARE BASED ON AC 110.



EOM-2-EOM-8 (75% DUTY CYCLE)  
EOM-9-EOM-13 (50% DUTY CYCLE)

### POTENTIOMETER UNIT

This option can be ordered with on/off actuators. The selection has 1k or 5k ohm resistance values and it provides feedback signal for position indicator.



EOM-1, EOM-A, EOM-A-M



EOM-2-EOM-13

### LOCAL CONTROL UNIT

This option can be used for field control. It provides local/remote selection switches and open/close selection switches. It is available for EOM-2 to EOM-13 actuators.



WITH LOCK



WITHOUT LOCK  
(STANDARD)

### OPTION ITEMS

#### TORQUE SWITCHES

This option can provide over-load protection. It is available for EOM-2 to EOM-13 actuators and must be ordered with actuator.



#### ADJUSTABLE SPEED BOARD

This option can adjust the actuator speed (running time) from standard to 30s, 60s (max. 200s) according to user's need. It is available for EOM-2 to EOM-13 AC 110/240V, 1-Phase actuators.



#### CHAIN WHEEL

This option can convert the handwheel override to a chain driven override in application of actuator mounted at a distance above the floor. It is available for EOM-2 to EOM-13 actuators.



#### WIRING BOX

This option is a separate terminal box and allows wiring of the actuator without removing the actuator cover. Available for EOM-2 to EOM-13.



#### CONDUIT ENTRANCE

Standard: 1/2" PS  
Optional: 3/4" PF, 1/2" NPT, M20

#### ENCLOSURE

Plastic housing cover  
Nylon coating  
Fusion bonded epoxy coating  
Epoxy coating

#### MOTOR

Motor insulation class:  
Standard: F class  
Optional: H class

#### VARIOUS VOLTAGE

AC/DC 12V  
AC/DC 24V  
AC 110, 1-Phase  
AC 240/415V, 3-Phase