

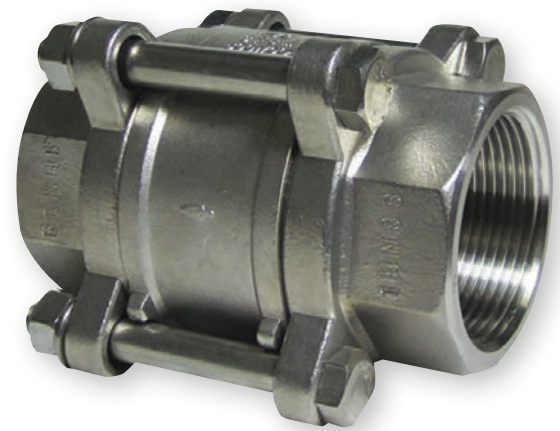
V3WC SERIES

3 PIECE BSP, CLASS 600 PSI
316 STAINLESS STEEL DISC CHECK VALVE



ADVANTAGES

- ▷ PN40 rated.
- ▷ Threaded BSP.
- ▷ Quality investment casting body & cap.
- ▷ Butt weld & socket weld (optional).



TECHNICAL DATA

Size Range	DN10 - DN100 (1/4" - 4")
Pressure Rating	600 PSI W.O.G.

V3WC SERIES

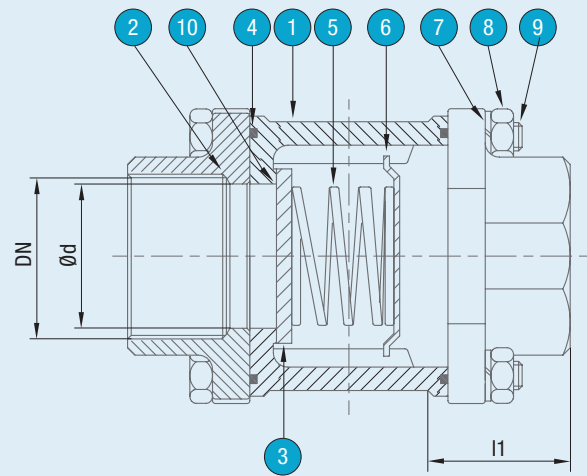
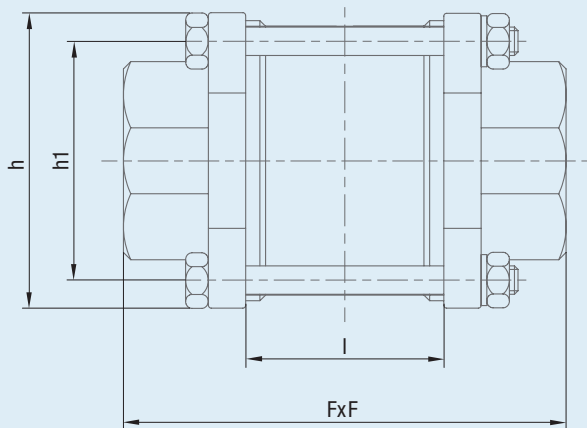
CHECK VALVE

MATERIAL SPECIFICATIONS & PARTS LIST

NO.	DESCRIPTION	MATERIAL
1	Body	CF8M
2	End Cap	CF8M
3	Disc	SS316
4	Body Seal	PTFE
5	Spring	SS316

NO.	DESCRIPTION	MATERIAL
6	Spring Holder	SS316
7	Washer	SS304
8	Nut	SS304
9	Bolt	SS304
10	Seat	PTFE

DIMENSIONAL DRAWING



DIMENSIONS (MM)

V3WC SERIES DN10-DN100								
DN	NPS	FxF	h	h1	Ød	l	l1	WEIGHT (KG)
8	1/4"	49	37.6	26.5	12	16.7	16.6	0.24
10	3/8"	49.4	37.1	27.5	12	16.7	16.6	0.22
15	1/2"	65.5	45.9	30.5	14	18	27.5	0.36
20	3/4"	70	50.9	35.2	18	22	28.5	0.48
25	1"	78	56.1	40.8	24	27.5	30.3	0.63
32	1 1/4"	96	67.4	49.9	30	32	38.5	1.09
40	1 1/2"	102	75.4	58.2	36	37	39	1.53
50	2"	118	88	70	48	47	43	2.32
65*	2 1/2"	145	113	90.5	63	47	56.5	4.41
80*	3"	156	130.8	106.8	76	55	59.5	6.88

* Available on request

PRESSURE RATINGS

