

## TECHNICAL DATA

Size Range:	DN15 - DN300 (½" - 12")
Pressure Rating:	300PSI W.O.G
Features:	<ul style="list-style-type: none"> <li>Investment casting body (also available in WCB or SAF).</li> <li>Face to Face ANSI B16.10</li> <li>Flanged ANSI B16.5</li> <li>Design to ANSI B16.34</li> <li>Tested to API598</li> </ul>

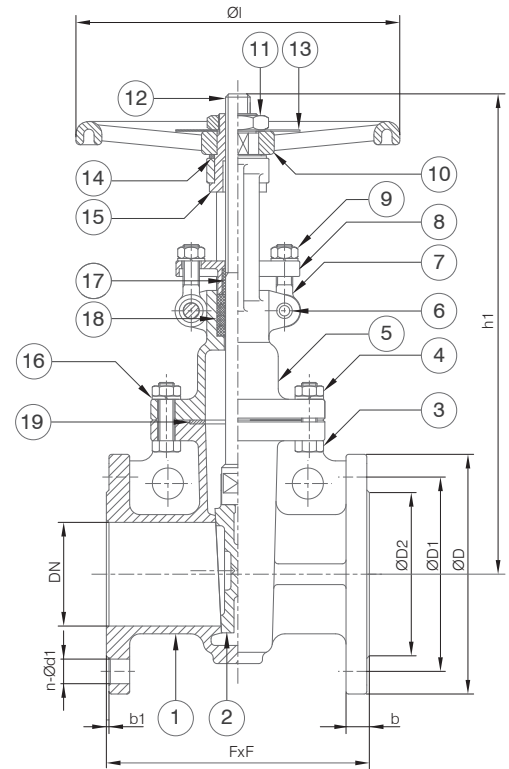


## MATERIAL SPECIFICATIONS & PARTS LIST

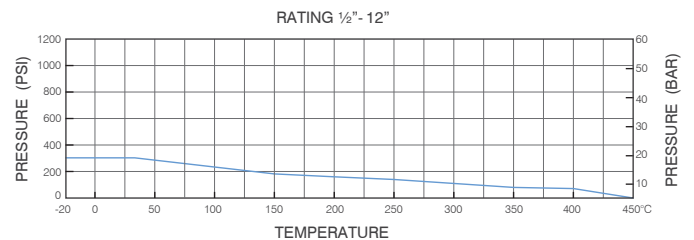
NO.	DESCRIPTION	MATERIAL	NO.	DESCRIPTION	MATERIAL
1	Body	CF8M	11	Nut	Bronze
2	Disc	CF8M	12	Stem	SS316
3	Bonnet Bolt	SS304	13	Name Plate	SS304
4	Bonnet Nut	SS304	14	Gasket	Bronze
5	Bonnet	CF8M	15	Yoke Sleeve	Bronze
6	Hinge Pin	SS304	16	Spring Washers	SS304
7	Eye Bolt	SS304	17	Stem Bushing	PTFE
8	Gland	CF8	18	Gland Packing	Graphite
9	Eye Nut	SS304	19	Gasket	304 + Graphite
10	Hand Wheel	Cast Iron			

## DIMENSIONS (MM)

VT-GAF-316-150 DN15 - DN300										
DN	NPS	FxF	b	b1	ØD	ØD1	ØD2	n-Ød1	h1	ØI
15	½"	108	11.1	1.6	89	60.5	35	4-16	190	120
20	¾"	117	11.1	1.6	98	70	43	4-16	195	120
25	1"	127	11.1	1.6	108	79.5	51	4-16	234	120
32	1 ¼"	140	12.7	1.6	117	89.5	64	4-16	297	200
40	1 ½"	165	14.3	1.6	127	98.5	73	4-16	300	200
50	2"	178	15.9	1.6	152	120.5	92	4-19	331	200
65	2 ½"	190	17.5	1.6	178	139.5	105	4-19	393	200
80	3"	203	19.1	1.6	190	152.5	127	4-19	470	250
100	4"	229	23.9	1.6	229	190.5	157	8-19	545	250
125	5"	254	23.9	1.6	254	216	186	8-22	640	300
150	6"	267	25.4	1.6	279	241.5	216	8-22	740	300
200	8"	292	28.6	1.6	343	298.5	270	8-22	910	350
250	10"	330	30.2	1.6	406	362	324	12-25	1097	400
300	12"	356	31.8	1.6	483	432	381	12-25	1285	400



## PRESSURE RATINGS



FACTORY ACCREDITED:



FIRE SAFETY  
APPROVAL AP1607

6D-0645

No. WZ 1093  
HH 1

NUMBER  
0035

Designs, materials and specifications shown are subject to change without notice due to our continuing program of product development. VT-GAF-316-150\_V1\_20130423.

All content is protected by Copyright and is owned and/or licensed by AVFI Pty Ltd. Copyright © AVFI Pty Ltd.