

BETA-SDC

BSP WATER METER DN15-DN50



ADVANTAGES

- ▷ Multi-jet impeller meter.
- ▷ Magnetic drive.
- ▷ Frost resistant dry dial.
- ▷ Fusion Bonded Epoxy coated (cold water).
- ▷ Hermetically vacuum sealed register.
- ▷ Meets international standard ISO4064 Class B.
- ▷ Reed switch output when connected to a power supply.
- ▷ Pulse rate of 1 pulse per 1 litre for DN15-40
Pulse rate of 1 pulse per 10 litres for DN50
- ▷ Magnetic shield for external magnetic field protection.
- ▷ Internal strainer.



OPTIONS

- ▷ Hot water model (maximum 90°C).
- ▷ Resettable Remote LCD Display

TECHNICAL DATA

Size Range	DN15 - DN50
Pressure Classes	PN16
Maximum Temperature Rating	40°C for Cold Potable Water Meter 90°C for Hot Water Meter

BETA-SDC WATER METERS

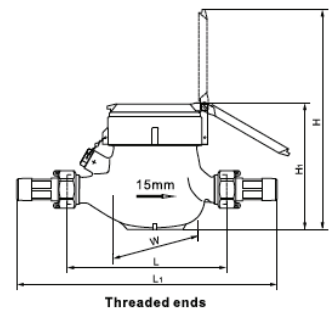
BSP WATER METERS

INSTALLATION

- ▷ Supplied complete with couplings.
- ▷ Must be installed horizontally, with the direction of flow as indicated by the arrow cast in the meter body, and the register face upwards.
- ▷ Meter is designed for clean water and it is recommended to install a strainer before the meter to capture any debris that could damage the meter.
- ▷ The water meter must be installed to have 10 times the diameter of straight pipe before the meter and 5 times the diameter of straight pipe after the meter to ensure proper flow through the meter.
- ▷ The water meter should not be submerged.
- ▷ Isolation valves must be installed upstream and downstream of the meter to allow for any maintenance or replacement.
- ▷ The nominal diameter of the meter should be selected according to the volume of water passing through the pipeline.
- ▷ Distance between the meter and a data collector $\leq 100\text{m}$.

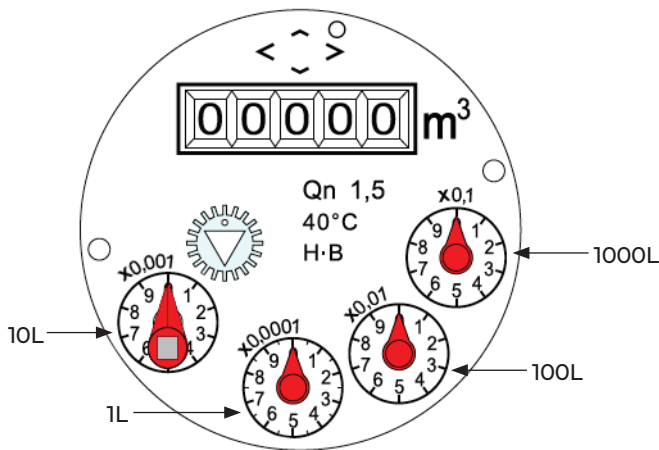
DIMENSIONS (MM)

DN	BODY LENGTH (L)	OVERALL LENGTH (L1)	WIDTH (W)	HEIGHT (H)	WORKING HEIGHT (H1)	BODY THREAD (D)	CONNECTOR THREAD (d)	WEIGHT (KG)
15	165	259	99	107.5	191	G 3/4B	R 1/2	1.5
20	190	294	99	107.5	191	G 1B	R 3/4	1.7
25	225	345	103	117.5	206.5	G1	R1	2.6
32	230	354	104	117.5	206.5	G1	R1 1/4	2.8
40	245	376	124	141.5	256.5	G 2B	R1 1/2	5.1
50	280	448	125	177	292	G2	R2	8.5

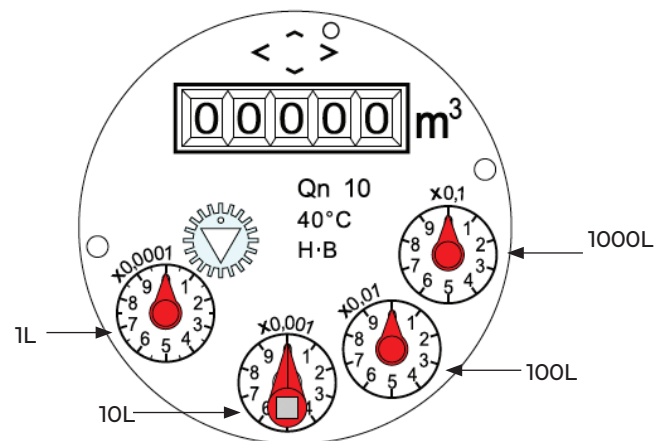


REGISTER

BETA - SDC - 15 to BETA - SDC - 40



BETA - SDC - 50



DATA OUTPUT OPTIONS

- ▷ Different pulse rates available upon request.

POSITIONS OF SPECIAL POINTER	X0,0001	X0,001	X0,01	X0,1
WATER QUANTITY FOR EACH CIRCLE	1L	10L	100L	1000L
DN 15/20/25/32/40	■	□	□	□
DN50		■	□	□

- Standard
- Optional from factory

BETA-SDC WATER METERS

BSP WATER METERS

TECHNICAL DATA

DN	MAXIMUM FLOW (m ³ /h) - Qs	NOMINAL FLOW RATE (m ³ /h) - Qp	TRANSITION FLOW RATE (L/h) - Qt	MINIMUM FLOW RATE (L/h) - Qmin	MAXIMUM READING (m ³)	MINIMUM READING (m ³)
15	3	1.5	120	30	99999	0.0001
20	5	2.5	200	50	99999	0.0001
25	7	3.5	280	70	99999	0.0001
32	12	6	480	120	99999	0.0001
40	20	10	800	200	99999	0.0001
50	30	15	1200	300	99999	0.001

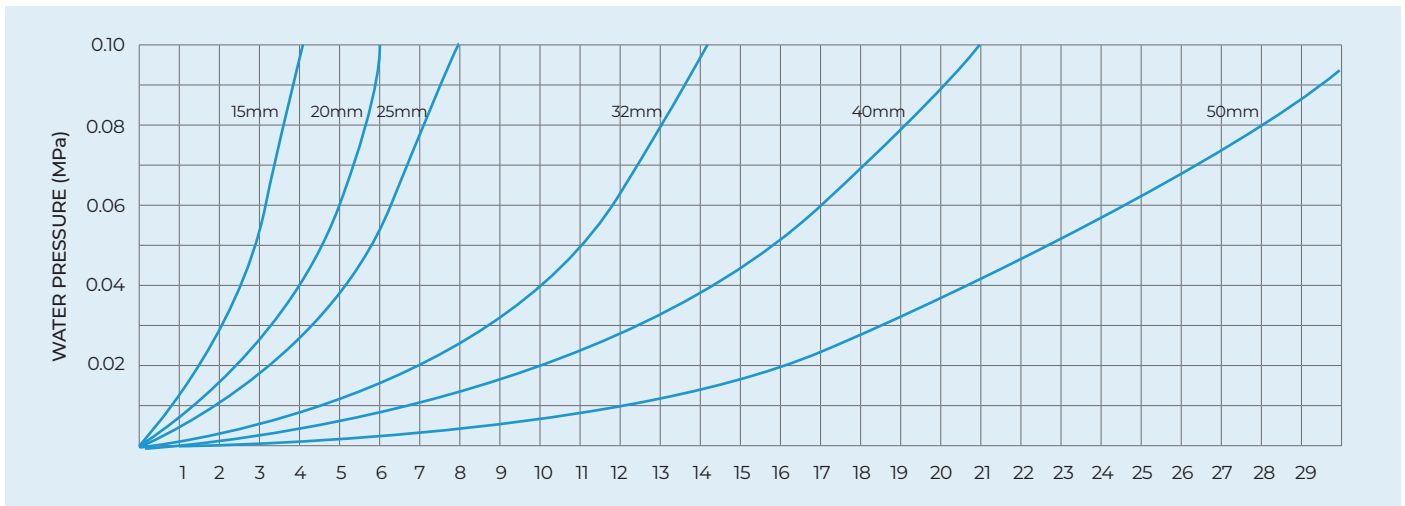
* Maximum Permissible Error:

- ▷ In the lower zone from Qmin inclusive up to but excluding Qt is $\pm 5\%$.
- ▷ In the upper zone from Qt inclusive and up to and including Qs is:
Cold potable meter is $\pm 2\%$.
Hot water meter is $\pm 3\%$.

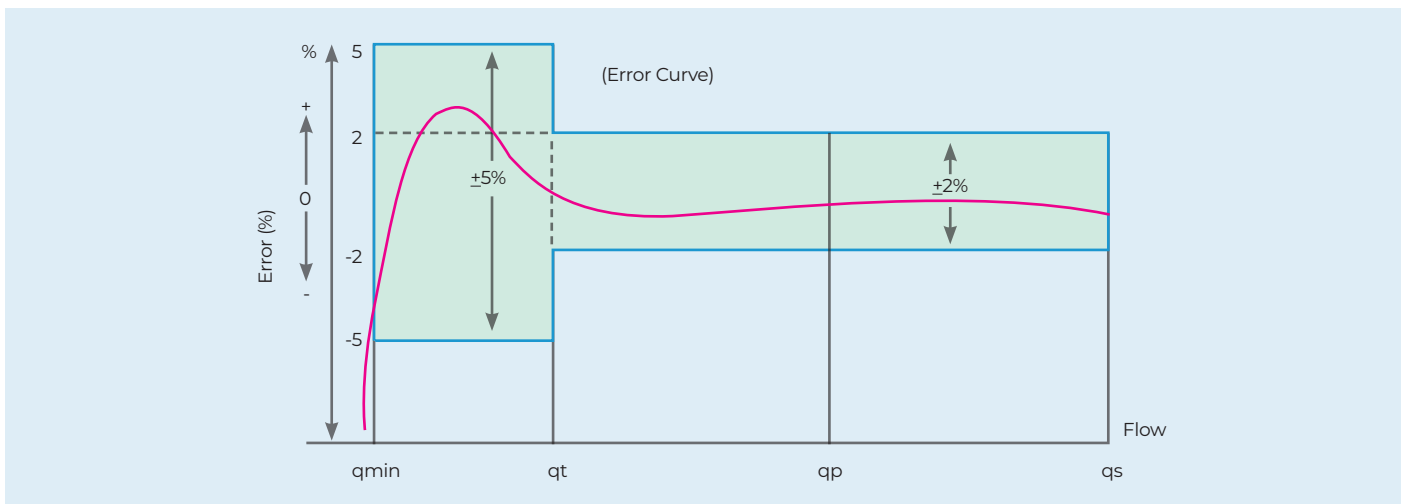
PULSE OUTPUT

- ▷ The Pulse Emitter Device consists of a plastic housing with single Reed Switch, and 1.5m cable with 2 Cores in Red and Black.
- ▷ Electric Data: Vmax=24AC/DC; Imax=0,01A

PRESSURE LOSS CURVE



PRESSURE LOSS CURVE



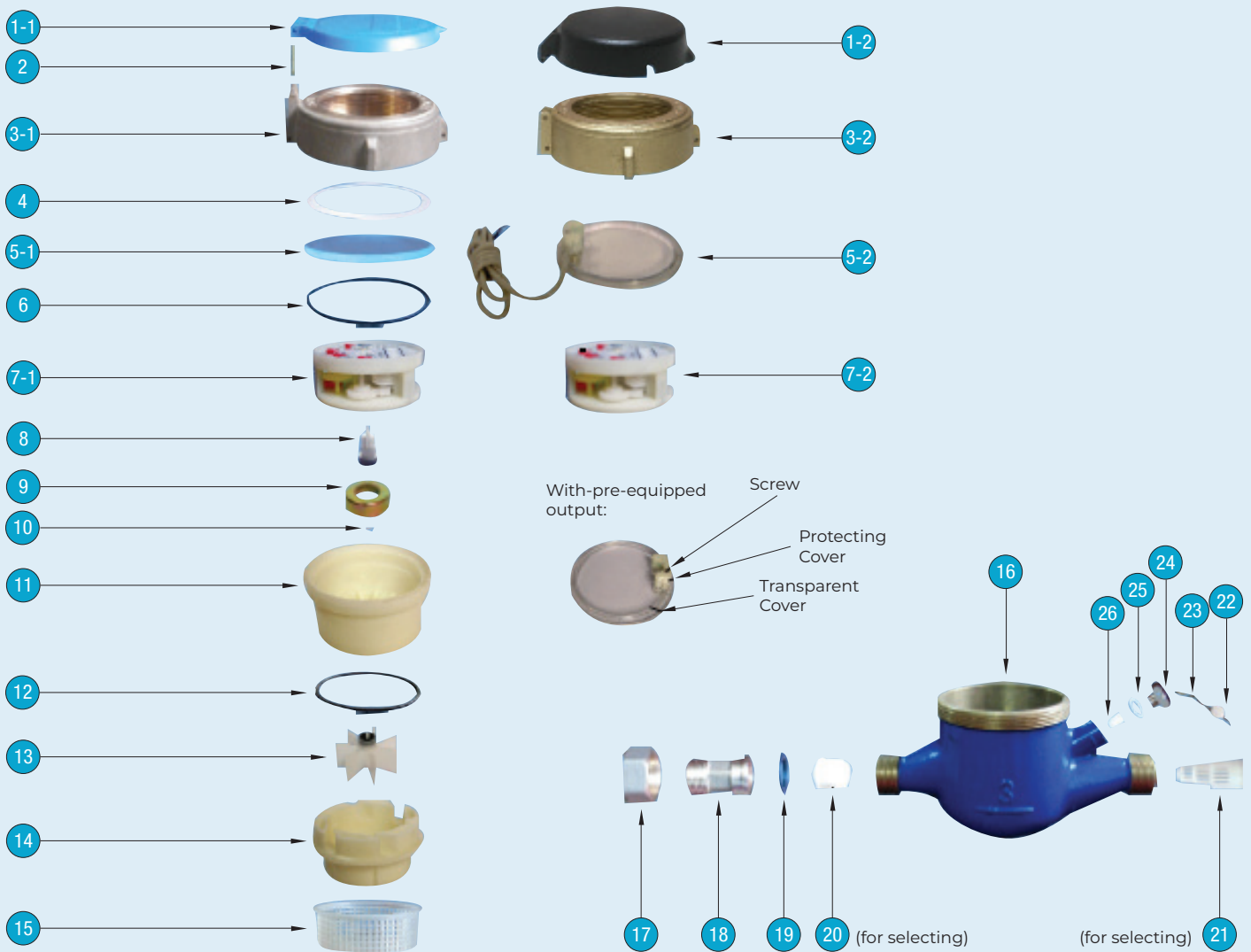
BETA-SDC WATER METERS

BSP WATER METERS

MATERIAL SPECIFICATIONS & PARTS LIST

NO.	DESCRIPTION	QTY
1-1	Lid	1
1-2	Lid (with reed switch option)	1
2	Hinge pin	1
3-1	Retaining Ring	1
3-2	Retaining Ring (with reed switch option)	1
4	Gasket	1
5-1	Lens	1
5-2	Transparent Cover Assembly	1
6	O-Ring	1
7-1	Register	1
7-2	Register (with reed switch option)	1
8	Central Gear	1
9	Magnetic Shield	1
10	Bush	1
11	Register Chamber	1

NO.	DESCRIPTION	QTY
12	Gasket	1
13	Impeller	1
14	Measuring Chamber	1
15	Internal Strainer	1
16	Body	1
17	Nut	2
18	Coupling	2
19	Gasket	2
20	Non Return Valve (for selecting)	1
21	Inlet Strainer (for selecting)	1
22	Seal Lead	1
23	Copper Wire	1
24	Regulating Bolt	1
25	Gasket	1
26	Regulating Screw	1



54 Enterprise Drive, Bundoora, VIC, 3083
 p. 1300 789 256 | e. sales@avfi.com.au
 avfi.com.au

Designs, material and specifications shown are subject to change without notice due to our continuing program of product development.

All content is protected by Copyright and is owned and/or licensed by AVFI Pty Ltd. Copyright © AVFI Pty Ltd

